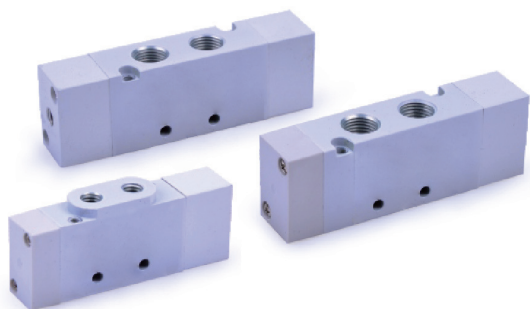
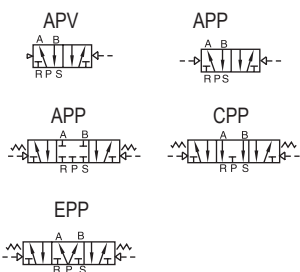


## PNEVMATSKO KRMILJENI 5/2 IN 5/3 VENTILI SERIJA PRA6A



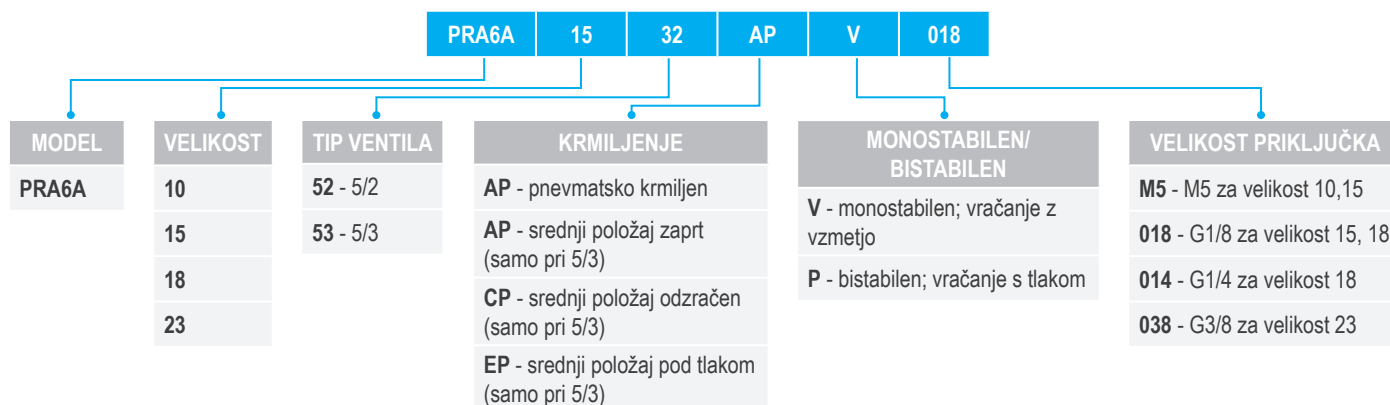
### SIMBOL



MODEL	1052APV	1052APP	1053	1552APV	1552APP	1553
VELIKOST PRIKLJUČKA	Vhod=Izhod=Izpust= M5			Vhod=Izhod=Izpust= M5 / G 1/8		
NAZIVNI PRESEK	5.0mm <sup>2</sup>		4.5mm <sup>2</sup>	10.0mm <sup>2</sup>		8.5mm <sup>2</sup>
NAZIVNI PRETOK	Qn=265 NI/min		Qn=235 NI/min	Qn=550 NI/min		Qn=480 NI/min
MASA (g)	35	50	65	60	75	90
MEDIJ	Filtriran zrak 20 μ					
AKTIVIRANJE	Centralno napajanje pilotnega ventila					
DELOVNI TLAK	5/3: 2.0 - 8.0 bar; 5/2: 1.5 - 8.0 bar					
PREIZKUSNI TLAK	12 bar					
TEMPERATURA	-20 - 70°C					
MATERIAL OHIŠJA	Aluminij					
ŠTEVILO PREKLOPOV	5 ciklov/sek		3 cikli/sek	5 ciklov/sek		3 cikli/sek

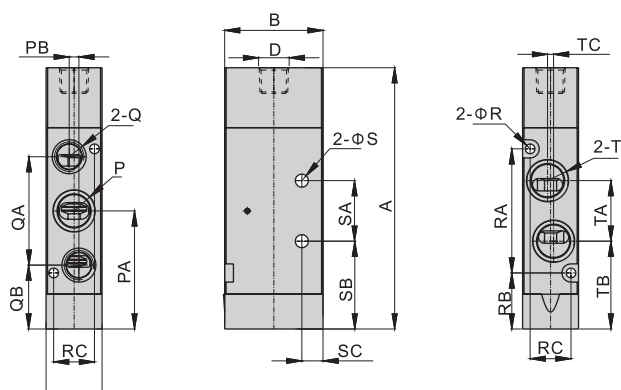
MODEL	1852APV	1852APP	1853	2352APV	2352APP	2353
VELIKOST PRIKLJUČKA	Vhod=Izhod= G 1/8 / G 1/4; Izpust= G 1/8			Vhod=Izhod= G 3/8; Izpust= G 1/8		
NAZIVNI PRESEK	18.0mm <sup>2</sup>		14.0mm <sup>2</sup>	36.0mm <sup>2</sup>		21.6mm <sup>2</sup>
NAZIVNI PRETOK	Qn=1000 NI/min		Qn=775 NI/min	Qn=1890 NI/min		Qn=1135 NI/min
MASA (g)	100	115	130	230	265	305
MEDIJ	Filtriran zrak 20 μ					
AKTIVIRANJE	Centralno napajanje pilotnega ventila					
DELOVNI TLAK	5/3: 2.0 - 8.0 bar; 5/2: 1.5 - 8.0 bar					
PREIZKUSNI TLAK	12 bar					
TEMPERATURA	-20 - 70°C					
MATERIAL OHIŠJA	Aluminij					
ŠTEVILO PREKLOPOV	5 ciklov/sek		3 cikli/sek	5 ciklov/sek		3 cikli/sek

### KODA ZA NAROČILO



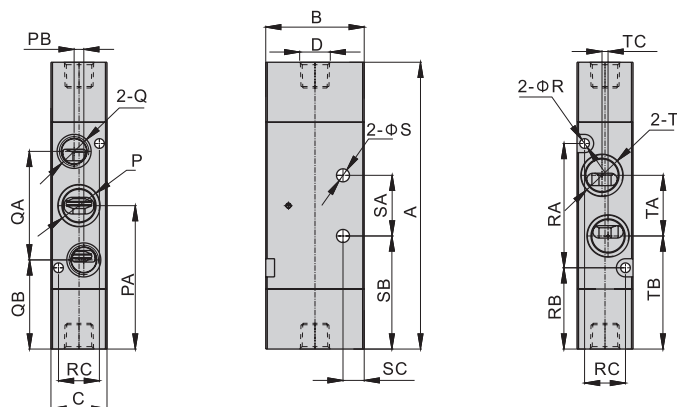
## DIMENZIJE

PRA6A 1032 APV  
PRA6A 1532 APV  
PRA6A 1832 APV  
PRA6A 2332 APV



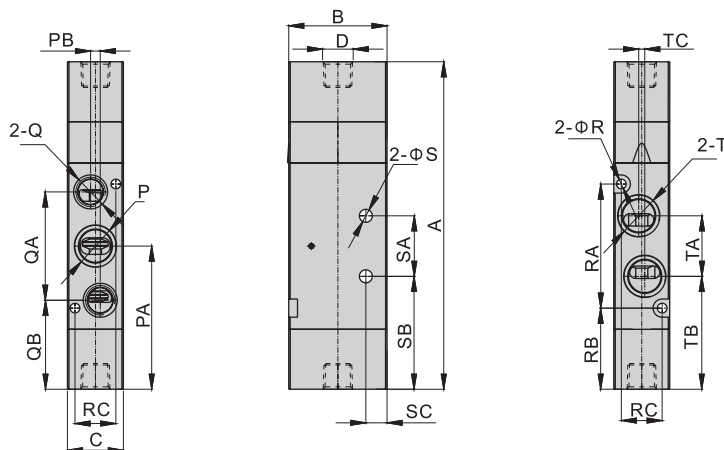
NERA	A	B	C	D	P	PA	PB	Q	QA	QB	R	RA	RB	RC	S	SA	SB	SC	T	TA	TB	TC
PRA6A 1052 M5	50.5	21	10.6	M5x0.8	M5x0.8	22.5	1	M5x0.8	19	13	2.1	22.5	11.5	7.5	Φ 2.6	10	17.5	4	M5x0.8	10.5	17.5	-
PRA6A1552 M5	70.5	24	15.5	M5x0.8	M5x0.8	33	2.6	M5x0.8	28	19	2.6	34	16	11	Φ 3.2	14	26	4	M5x0.8	16.5	24.5	-
PRA6A 1552 018	70.5	24	15.5	M5x0.8	G 1/8	33	2.6	G 1/8	28	19	2.6	34	16	11	Φ 3.2	14	26	4	G 1/8	16.5	24.5	-
PRA6A 1852 018	86.5	32.5	18.5	G 1/8	G 1/8	39	3.2	G 1/8	36	21	3.2	41	18.5	13.5	Φ 4.3	20	29	7	G 1/8	20	29	2
PRA6A 1852 014	86.5	32.5	18.5	G 1/8	G 1/4	39	3.2	G 1/8	36	21	3.2	41	18.5	13.5	Φ 4.3	20	29	7	G 1/4	20	29	2
PRA6A 2352 038	116	46	23.5	G 1/4	G 3/8	54	0	G 1/4	50	29	3.2	64	22	18.4	Φ 4.3	25	41.5	8	G 3/8	33.5	37	0

PRA6A 1032 APP  
PRA6A 1532 APP  
PRA6A 1832 APP  
PRA6A 2332 APP



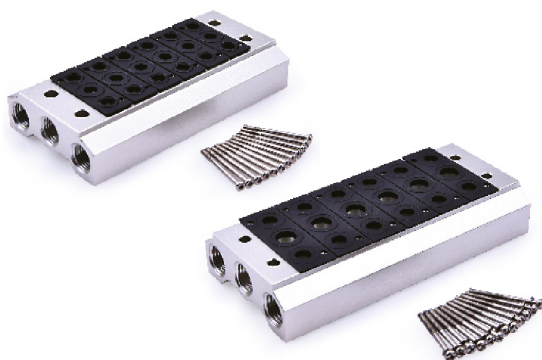
NERA	A	B	C	D	P	PA	PB	Q	QA	QB	R	RA	RB	RC	S	SA	SB	SC	T	TA	TB	TC
PRA6A 1052 M5	55.5	21	10.6	M5x0.8	M5x0.8	28	1	M5x0.8	19	18	2.1	22.5	16.5	7.5	Φ 2.6	10	22.5	4	M5x0.8	10.5	22.5	-
PRA6A1552 M5	75	24	15.5	M5x0.8	M5x0.8	37.5	2.6	M5x0.8	28	24	2.6	34	20.5	11	Φ 3.2	14	30.5	4	M5x0.8	16.5	29.5	-
PRA6A 1552 018	75	24	15.5	M5x0.8	G 1/8	37.5	2.6	G 1/8	28	24	2.6	34	20.5	11	Φ 3.2	14	30.5	4	G 1/8	16.5	29.5	-
PRA6A 1852 018	94.5	32.5	18.5	G 1/8	G 1/8	47.5	3.2	G 1/8	36	29.5	3.2	41	27	13.5	Φ 4.3	20	37.5	7	G 1/8	20	37.5	2
PRA6A 1852 014	94.5	32.5	18.5	G 1/8	G 1/4	47.5	3.2	G 1/8	36	29.5	3.2	41	27	13.5	Φ 4.3	20	37.5	7	G 1/4	20	37.5	2
PRA6A 2352 038	124	46	23.5	G 1/4	G 3/8	62	0	G 1/4	50	37	3.2	64	30	18.5	Φ 4.3	25	41.5	8	G 3/8	33.5	45.5	0

PRA6A 1032  
PRA6A 1532  
PRA6A 1832  
PRA6A 2332



MERA	A	B	C	D	P	PA	PB	Q	QA	QB	R	RA	RB	RC	S	SA	SB	SC	T	TA	TB	TC
PRA6A 1052 M5	64	21	10.6	M5x0.8	M5x0.8	28	1	M5x0.8	19	18	2.1	22.5	16.5	7.5	Φ 2.6	10	22.5	4	M5x0.8	10.5	22.5	-
PRA6A1552 M5	87	24	15.5	M5x0.8	M5x0.8	37.5	2.6	M5x0.8	28	24	2.6	34	20.5	11	Φ 3.2	14	30.5	4	M5x0.8	16.5	29.5	-
PRA6A 1552 018	87	24	15.5	M5x0.8	G 1/8	37.5	2.6	G 1/8	28	24	2.6	34	20.5	11	Φ 3.2	14	30.5	4	G 1/8	16.5	29.5	-
PRA6A 1852 018	108	32.5	18.5	G 1/8	G 1/8	47.5	3.2	G 1/8	36	29.5	3.2	41	27	13.5	Φ 4.3	20	37.5	7	G 1/8	20	37.5	2
PRA6A 1852 014	108	32.5	18.5	G 1/8	G 1/4	47.5	3.2	G 1/8	36	29.5	3.2	41	27	13.5	Φ 4.3	20	37.5	7	G 1/4	20	37.5	2
PRA6A 2352 038	142	46	23.5	G 1/4	G 3/8	62	0	G 1/4	50	37	3.2	64	30	18.5	Φ 4.3	25	41.5	8	G 3/8	33.5	45.5	0

## Priključne plošče



MERA / MODEL	PRA6V 1052	PRA6V 1552	PRA6V 1852	PRA6V 2352
MEDIJ	Filtriran zrak 20 μ			
TEMPERATURA	-20 - 70°C			

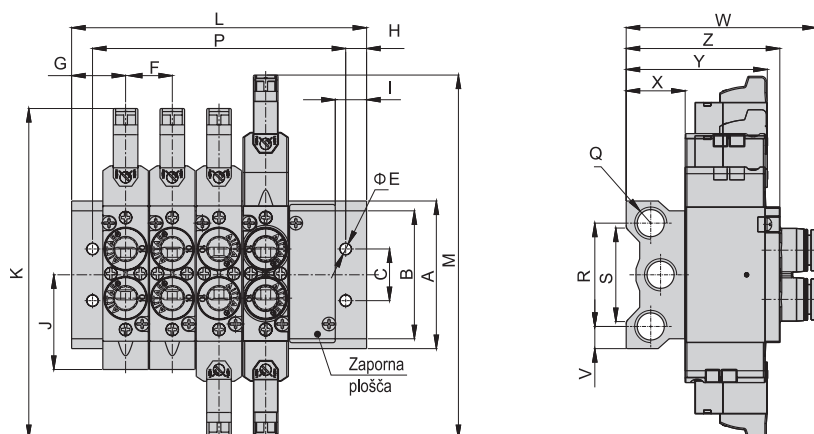
## KODA ZA NAROČILO

MODEL	VRSTA VENTILA	ŠTEVILO VENTILOV
PRA6V	1052	1F - 1 ventil
	1552	2F - 2 ventila
	1852	3F - 3 ventili
	2352	...
		20F - 20 ventilov

## KODA ZA NAROČILO PRIKLJUČNE PLOŠČE

MOŽNOSTI
10, 15, 18, 23

## DIMENZIJE



MERA	A	B	C	E	F	G	H	I	J	K	M	Q	R	S	V	W			X	Y	Z	
MODEL																						
PRA6V 1052	46	32	16	4.5	11	15	5	9.5	22.5	102	110	G 1/8	32	26	7	36.5 (M5)	50.5 (J04)			17	35.5	47.5
PRA6V 1552	57.5	43	20	4.5	16	17	5	9.5	33	121.5	133.5	G 1/4	40	36	9	55 (M5/06)	62.5(J04)/ 64 (J06)	65.5 (J08)	22	46	54	
PRA6V 1852	60	52	21	4.5	19	18.5	5	9.5	38.5	134.5	148	G 1/4	42	38	9	58.5 (06/08)	72.2 (J06)/ 76.5 (J08)	78.5 (J10)	24	57.5	62.5	
PRA6V 2352	85	75	26	4.5	23.5	24	5	12	54	167	185	G 3/8	57	58	14	-	-	-	27	74	-	

MERA	L																			
MODEL	1F	2F	3F	4F	5F	6F	7F	8F	9F	10F	11F	12F	13F	14F	15F	16F	17F	18F	19F	20F
PRA6V 1052	30	41	52	63	74	85	96	107	118	129	140	151	162	173	184	195	206	217	228	239
PRA6V 1552	34	50	66	82	98	114	130	146	162	178	194	210	226	242	258	274	290	306	322	338
PRA6V 1852	37	56	75	94	113	132	151	170	189	208	227	246	265	284	303	322	341	360	379	398
PRA6V 2352	48	72	96	120	144	168	192	216	240	264	288	312	336	360	384	408	432	456	480	504

MERA	P																			
MODEL	1F	2F	3F	4F	5F	6F	7F	8F	9F	10F	11F	12F	13F	14F	15F	16F	17F	18F	19F	20F
PRA6V 1052	20	31	42	53	64	75	86	97	108	119	130	141	152	163	174	185	196	207	218	229
PRA6V 1552	24	40	56	72	88	104	120	136	152	168	184	200	216	232	248	264	280	296	312	328
PRA6V 1852	27	46	65	84	103	122	141	160	179	198	217	236	255	274	293	312	331	350	369	388
PRA6V 2352	38	62	86	110	134	158	182	206	230	254	278	302	326	350	374	398	422	446	470	494